

Gloucester



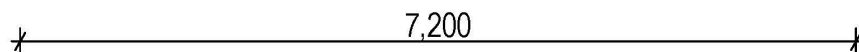
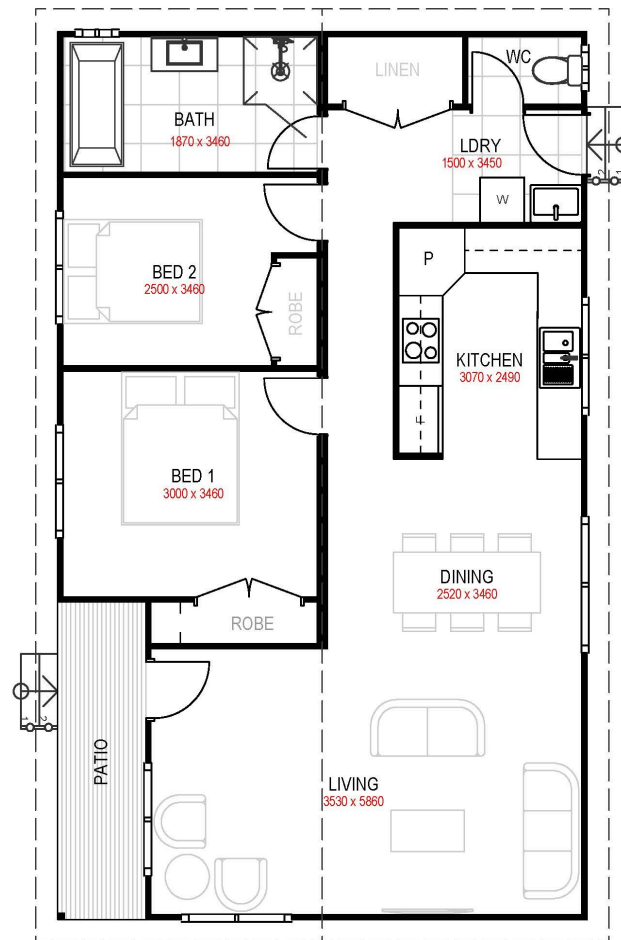
 2 |  1 |  84.96sqm

*Artist Impression – refer inclusions**



THE FUTURE IS MODULAR

W: huntervalleymodularhomes.com.au | E: admin@hvmh.com.au | P: 02 4028 0140



Home features | open plan living, Front patio, 2 bedroom, built in robe to bedrooms, walk through laundry, separate WC, freestanding bath

***Optional** | Mirror reversed, additional windows, surround boards, carport