

H design 2

4 BEDROOMS 2 BATHROOMS



CONTEMPORARY DESIGN

offering layouts that not only look great, but offer functionality and simplicity!

The H Design is created to give you options for linking modules together and creating a home that works for you.

As a result, down the track as you need more space, you'll have a host of different design ideas to work with - whether it's for additional bedrooms and bathrooms to accommodate a growing family or extra living rooms for more spacious living.

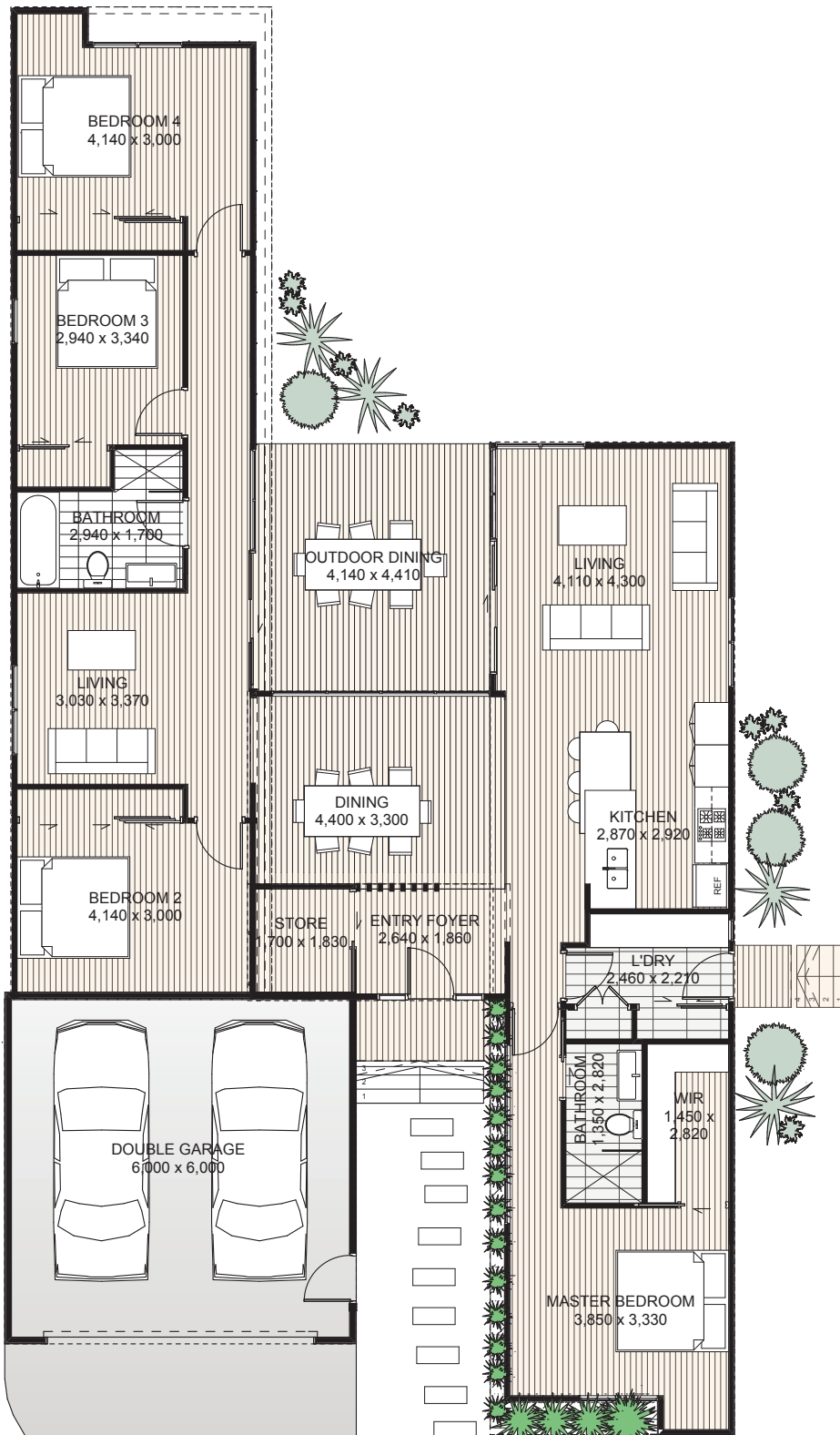
HOME DIMENSIONS

Length: 21.5m

Width: 12m

Area: 258m²

Note: Including Double garage.



P 02 4028 0111 | Cnr Kingston Parade & Pacific Highway Heatherbrae NSW 2324
huntervalleymodularhomes.com.au

IMPORTANT NOTICE: Colours are for illustration purposes and should be used as a guide only. All drawings and plans are not to scale and are subject to Copyright. Detailed home pricing, including charges for optional variations, can be obtained from Hunter Valley Homes consultants.

