

# the Kingston Rural Façade

3 BEDROOMS 2 BATHROOMS



## OPEN PLAN

Bring the outside, in and relish in the open plan of this rural design.

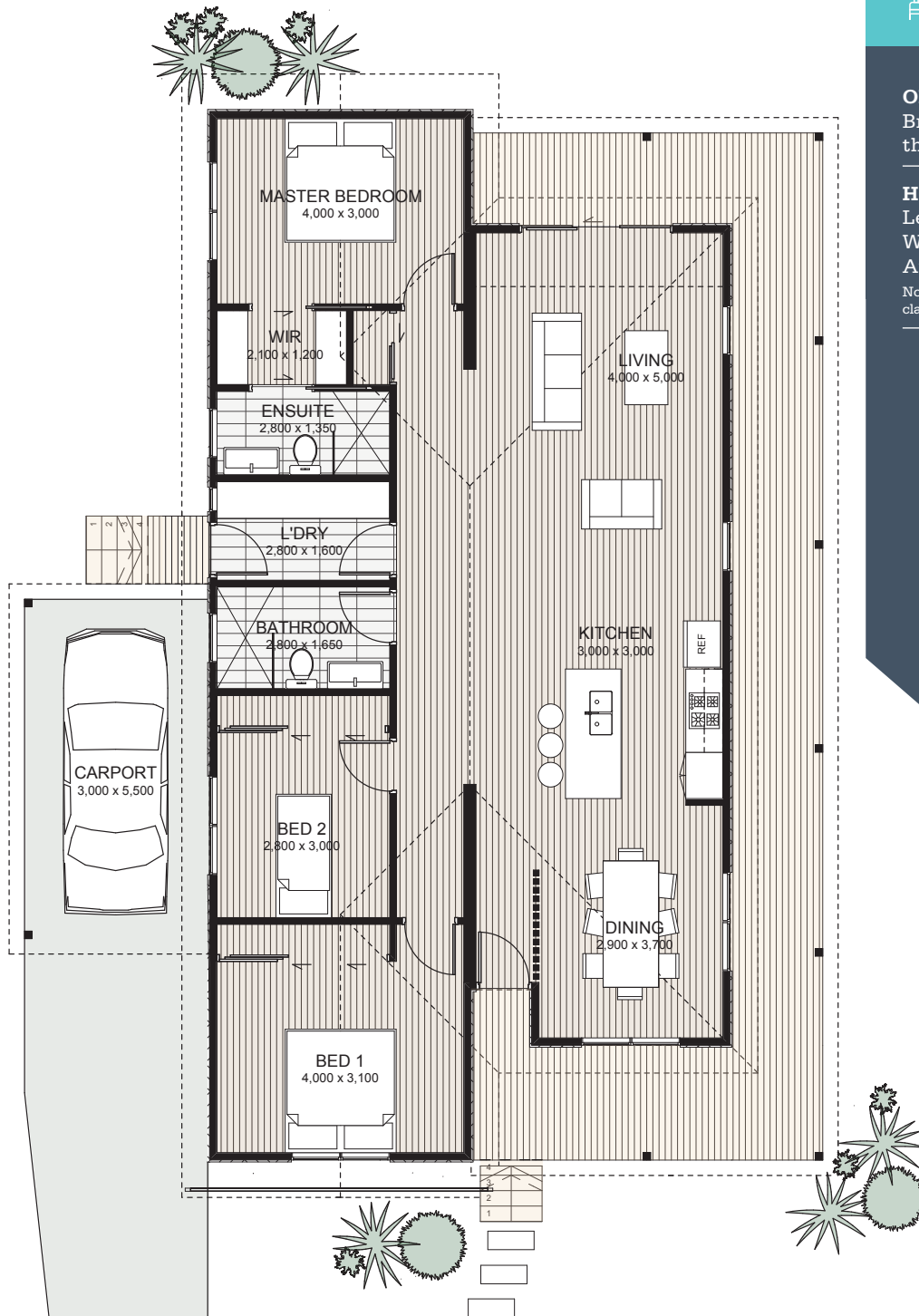
## HOME DIMENSIONS

Length: 17m

Width: 10.4m

Area: 142.8m<sup>2</sup>

Note: Design includes hip & gable roofing, cladding and deck. Carport is optional.



P 02 4028 0111 | Cnr Kingston Parade & Pacific Highway Heatherbrae NSW 2324  
[huntervalleymodularhomes.com.au](http://huntervalleymodularhomes.com.au)

*IMPORTANT NOTICE: Colours are for illustration purposes and should be used as a guide only. All drawings and plans are not to scale and are subject to Copyright. Detailed home pricing, including charges for optional variations, can be obtained from Hunter Valley Homes consultants.*

