

# Richardson



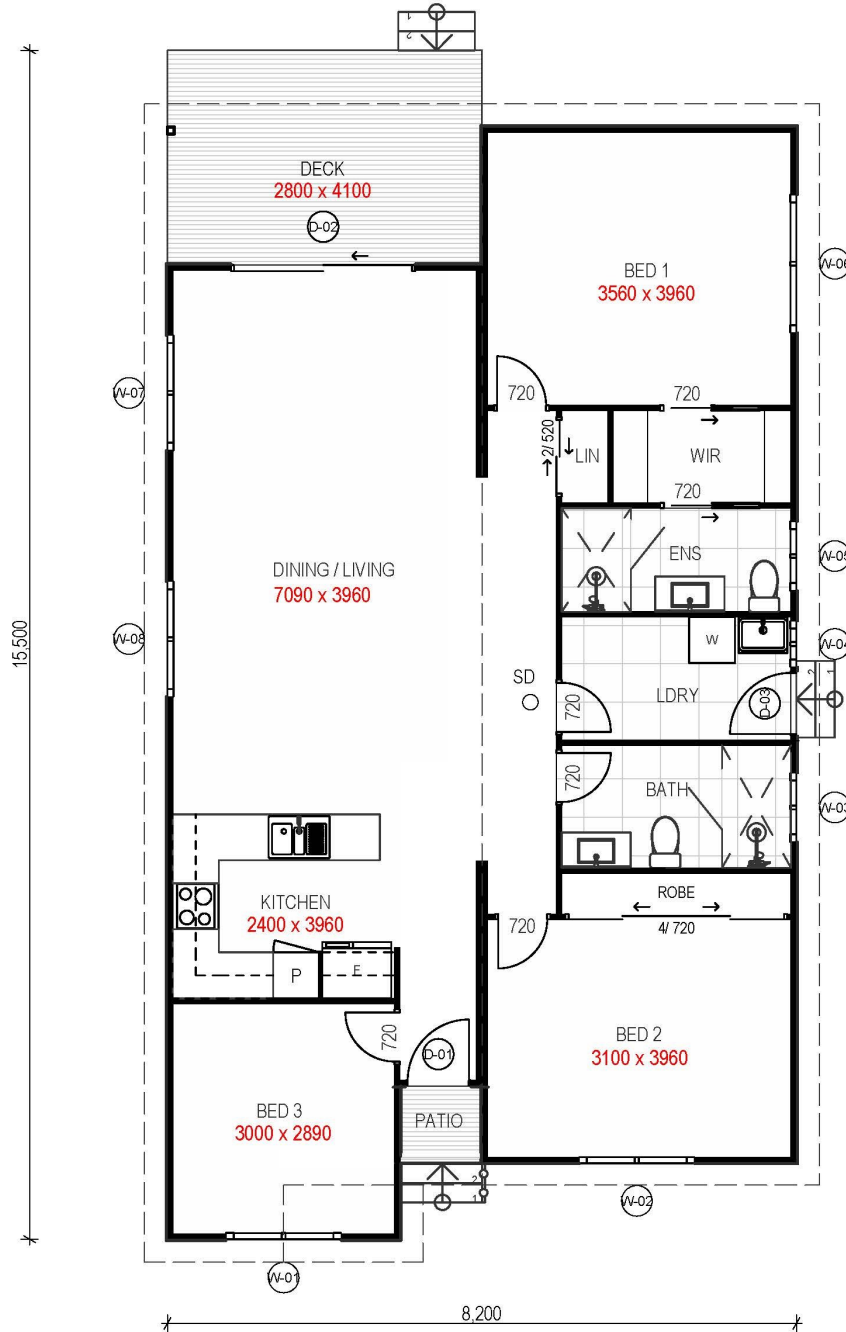
 2 |  2 |  127.1sqm

*Artist Impression - refer inclusions\**



## THE FUTURE IS MODULAR

W: [huntervalleymodularhomes.com.au](http://huntervalleymodularhomes.com.au) | E: [admin@hvmh.com.au](mailto:admin@hvmh.com.au) | P: 02 4028 0140



**Home features** | large outdoor dining, large master with walk through robe, oversized shower and vanity, option 3 bed/study

**\*Optional** | upgraded façade, cladding, roofline, surround boards, carport, feature entry steps, windows