

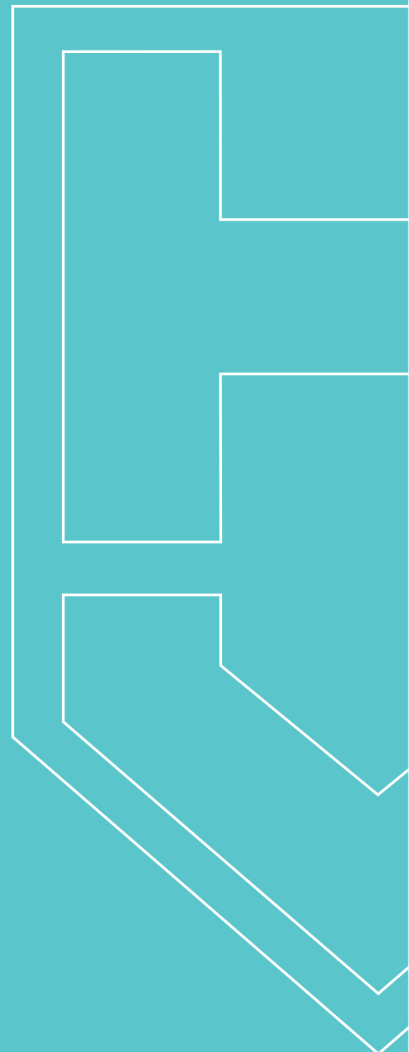


Artist impression (refer inclusions)

the Hunter Valley

 4 |  2

 HUNTER VALLEY
MODULAR
HOMES



the Hunter Valley

4 BEDROOMS 2 BATHROOMS



PERFECT FAMILY HOME FOR ACREAGE AND THE GROWING FAMILY!

This home has 4 spacious bedrooms, large family areas and a kitchen that any chef would love to use.

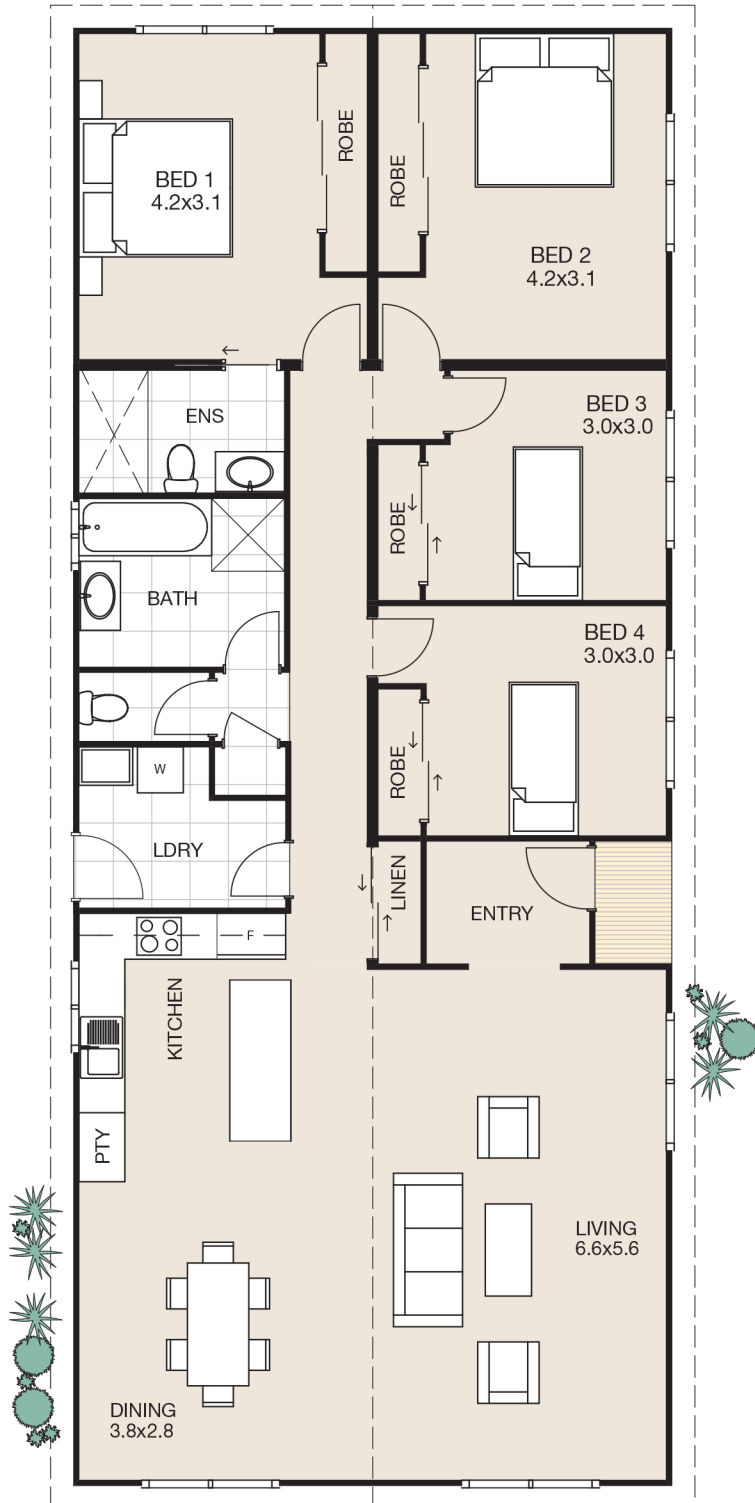
HOME DIMENSIONS

Length: 19m

Width: 7.8m

Area: 148.2m²

Note: Garages are not included as standard. Gable roof lines are standard. Split skillion and dutch gable are upgrades. Deck optional.



P 02 4028 0111 | Cnr Kingston Parade & Pacific Highway Heatherbrae NSW 2324
huntervalleymodularhomes.com.au

IMPORTANT NOTICE: Colours are for illustration purposes and should be used as a guide only. All drawings and plans are not to scale and are subject to Copyright. Detailed home pricing, including charges for optional variations, can be obtained from Hunter Valley Homes consultants.

