

# Branxton



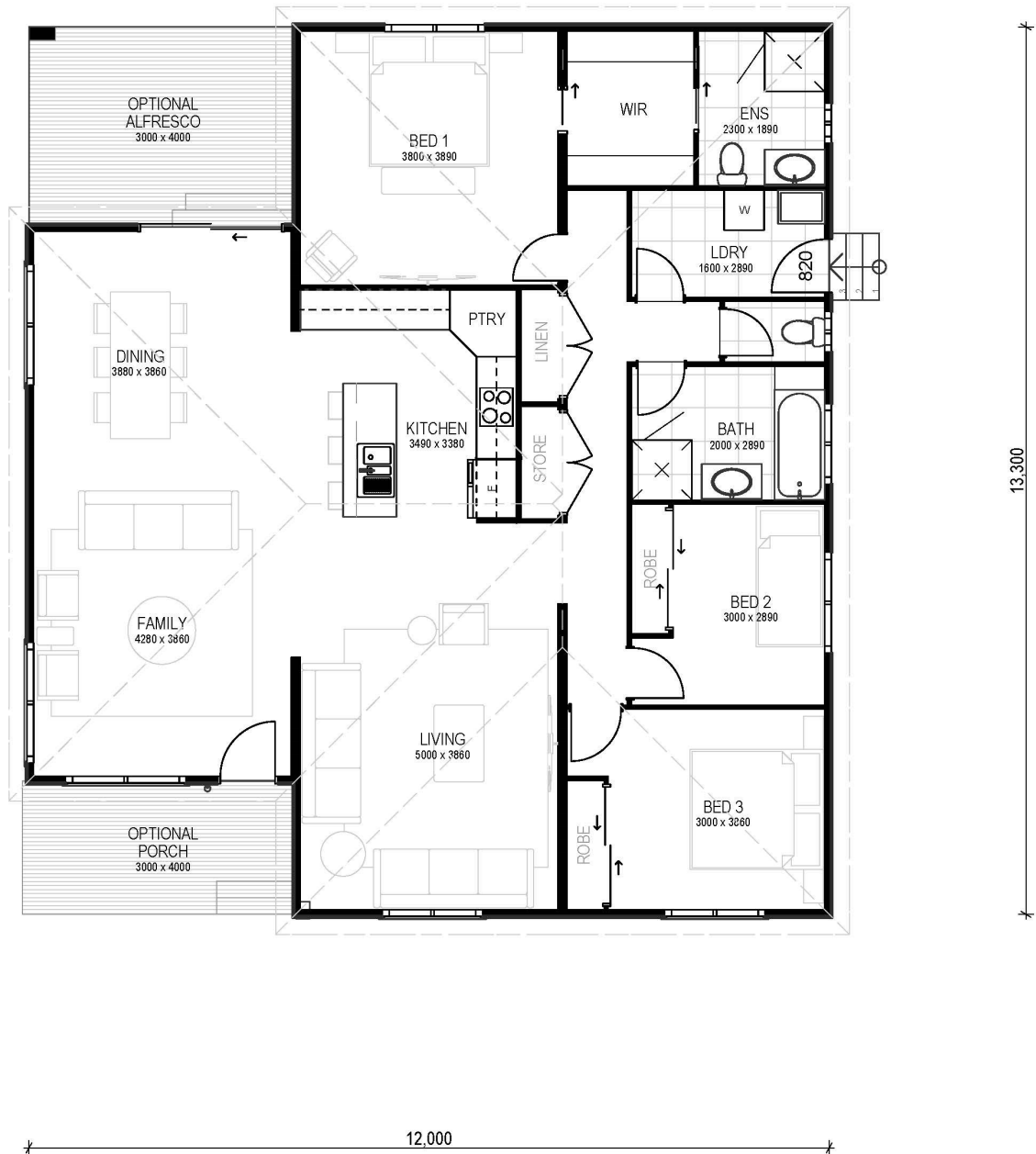
 3 |  2 |  159.6sqm

*Artist Impression - refer inclusions\**



## THE FUTURE IS MODULAR

W: [huntervalleymodularhomes.com.au](http://huntervalleymodularhomes.com.au) | E: [admin@hvmh.com.au](mailto:admin@hvmh.com.au) | P: 02 4028 0140



**Home features** | open plan living, 3 bedrooms, walk in robe and ensuite to master, walk through laundry, separate WC, freestanding bath, ample storage

**\*Optional** | upgraded cladding, roofline, windows, porch & alfresco, surround boards