

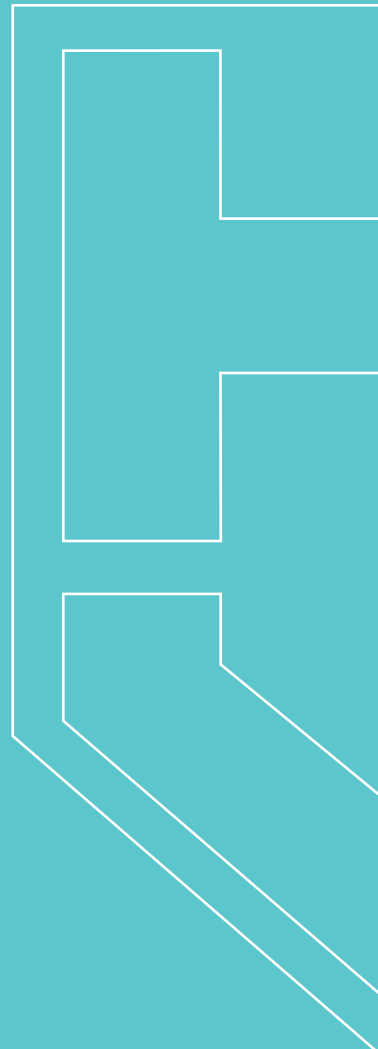


Artist impression (refer inclusions)

the Branxton

 3 |  2

 HUNTER VALLEY
MODULAR
HOMES



the Branxton

3 BEDROOMS 2 BATHROOMS



GREAT OPEN PLAN LIVING!

This popular country style home is perfect for sitting out on the verandah on a hot summer's day.

3 large living areas, large bathroom with separate WC and large modern kitchen.

WIR and ensuite to bed 1.

This home is sure to please many!

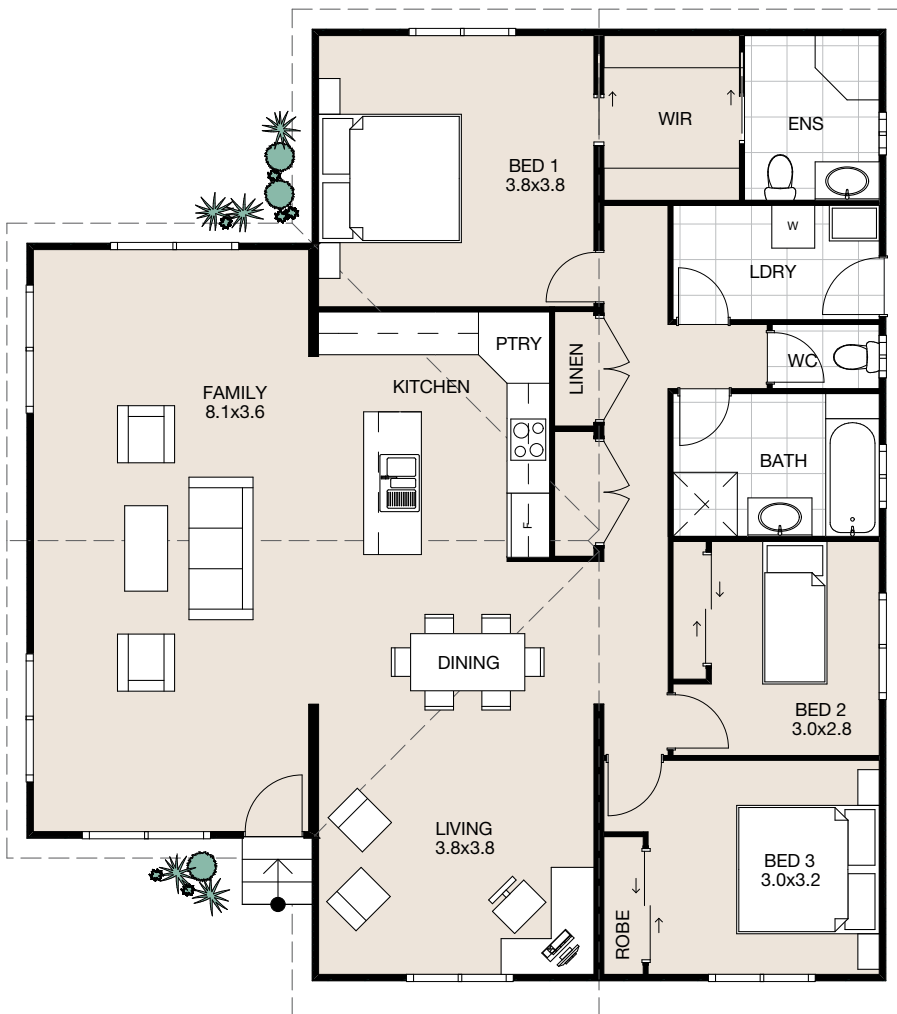
HOME DIMENSIONS

Length: 13.3m

Width: 12m

Area: 136m²

Note: Garages are not included as standard. Gable roof lines are standard. Split skillion and dutch gable are upgrades. Porch optional.



P 02 4028 0111 | Cnr Kingston Parade & Pacific Highway Heatherbrae NSW 2324
huntervalleymodularhomes.com.au

IMPORTANT NOTICE: Colours are for illustration purposes and should be used as a guide only. All drawings and plans are not to scale and are subject to Copyright. Detailed home pricing, including charges for optional variations, can be obtained from Hunter Valley Homes consultants.

