

Windermere



HUNTER VALLEY
**MODULAR
HOMES**



3



2



107.2sqm

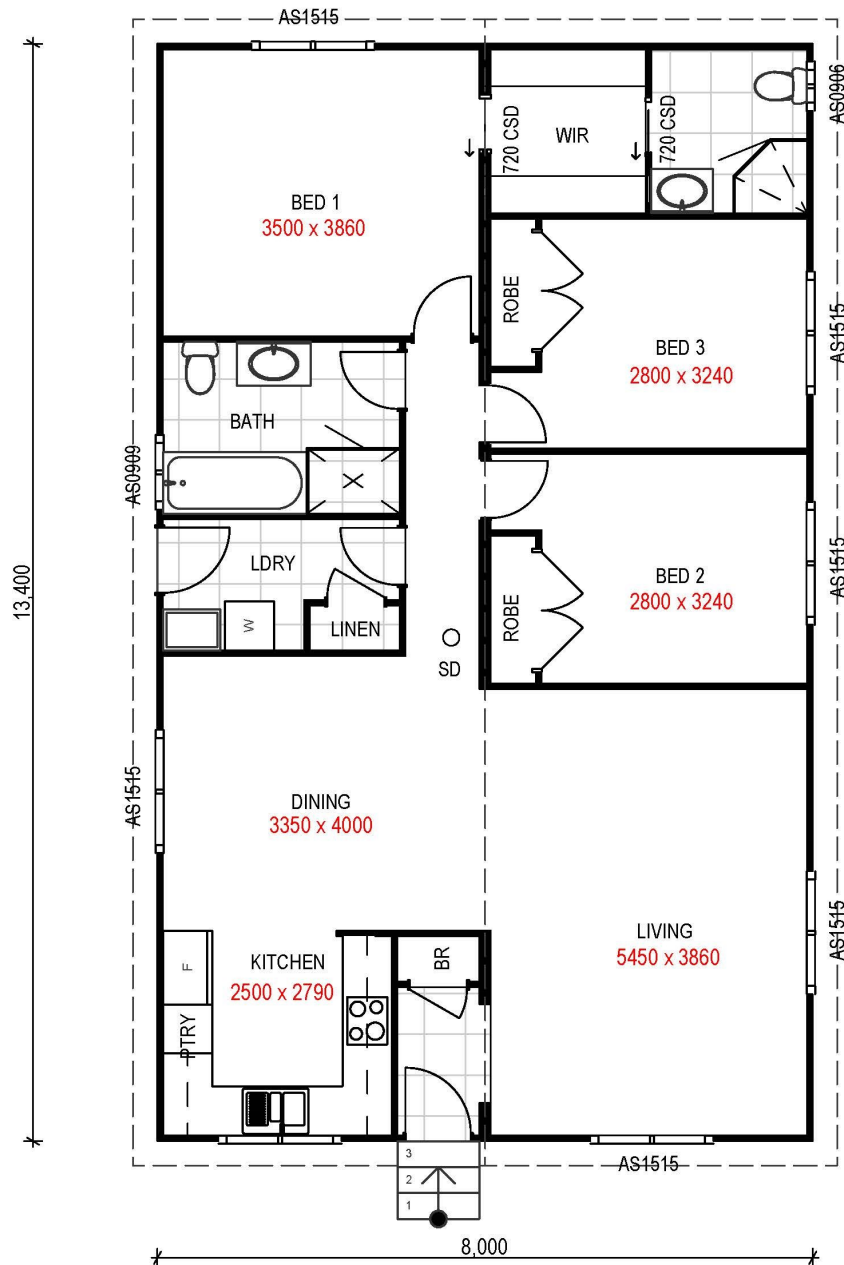
*Artist Impression - refer inclusions**



Artist Impression (refer inclusions)

THE FUTURE IS MODULAR

W: huntervalleymodularhomes.com.au | E: admin@hvmh.com.au | P: 02 4028 0140



Home features | open plan living, 3 bedrooms, walk through robe and ensuite to master, ample storage, freestanding bath

***Optional** | wrap around deck, additional windows, upgraded cladding, surround boards