

Derwent



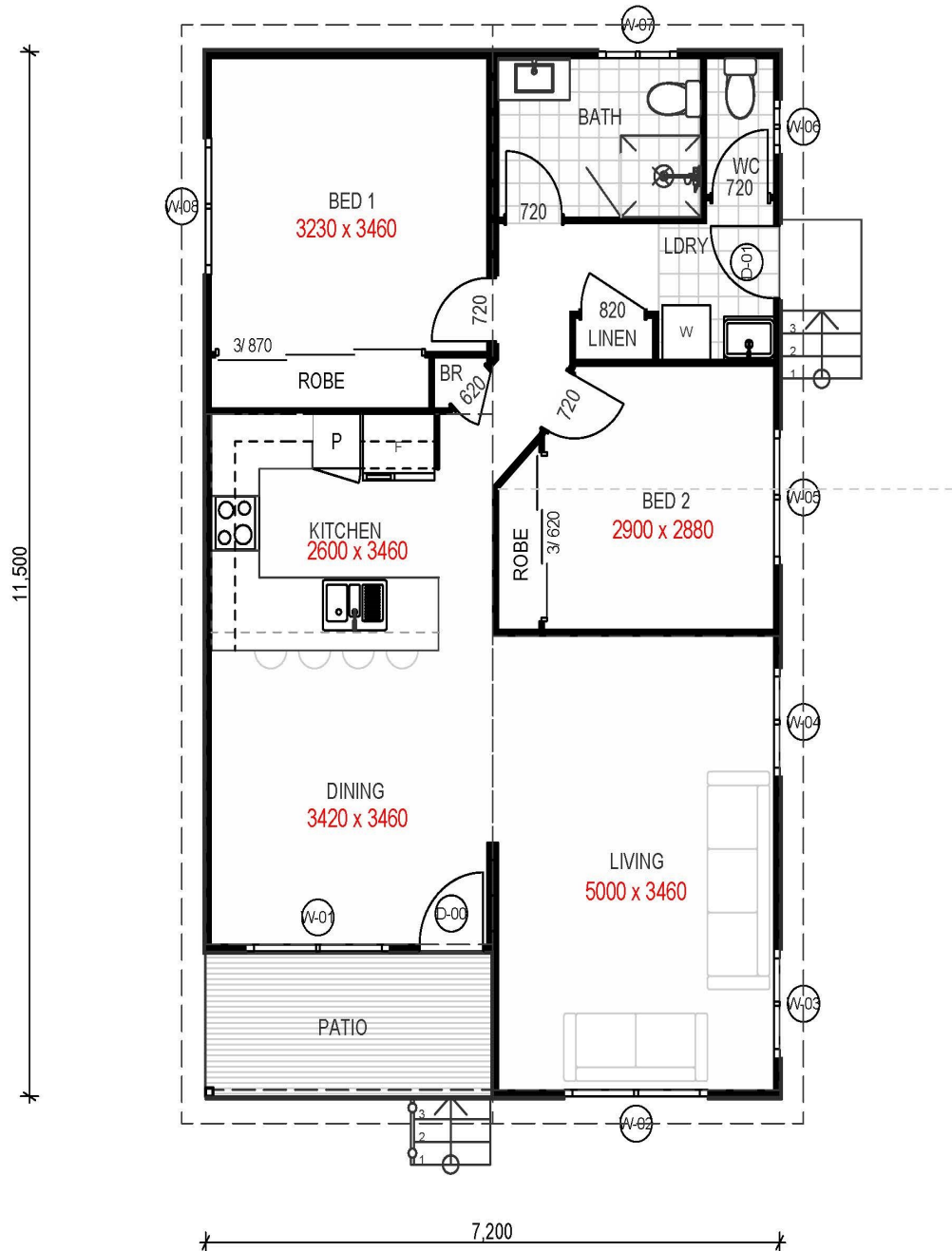
 2 |  1.5 |  82.8_{sqm}

*Artist Impression - refer inclusions**



THE FUTURE IS MODULAR

W: huntervalleymodularhomes.com.au | E: admin@hvmh.com.au | P: 02 4028 0140



Home features | open plan living, undercover front patio, large master bedroom, built in robes to bedrooms, walk through laundry, linen and broom cupboard, separate WC
***Optional** | double gable roof line, front pergola, double hung windows, ramp