

Willow



5



2



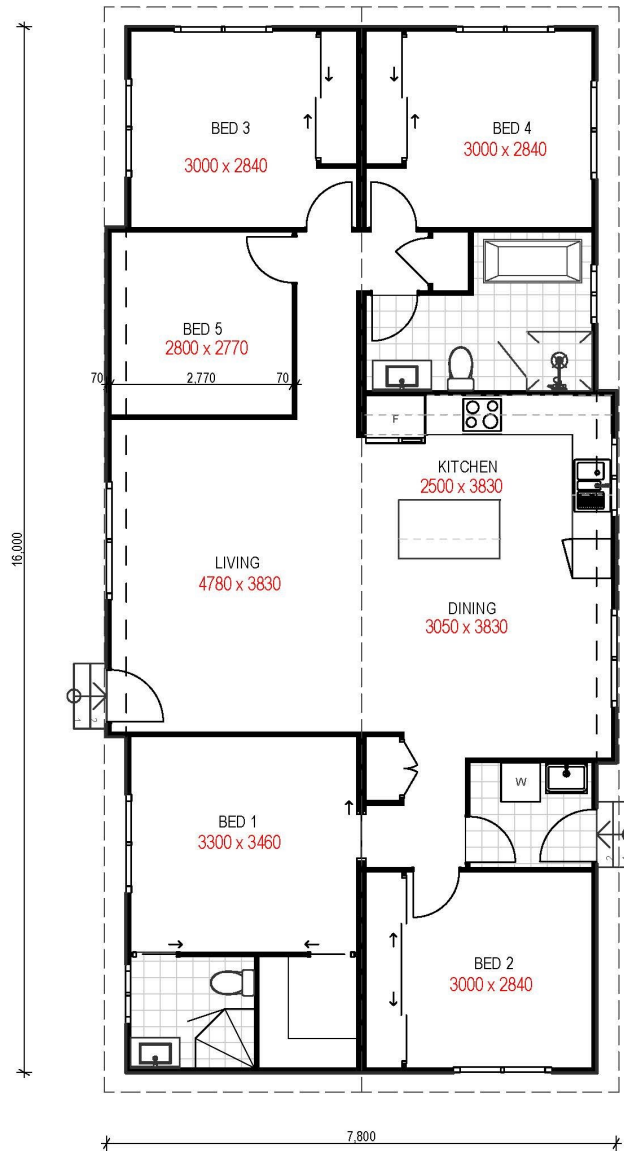
124.8sqm

*Artist Impression - refer inclusions**



THE FUTURE IS MODULAR

W: huntervalleymodularhomes.com.au | E: admin@hvmh.com.au | P: 02 4028 0140



Home features | open plan living, kitchen island bench, freestanding bath, walk in robe and ensuite to master

***Optional |** deck, roofline, upgraded cladding, additional windows and surround boards